



Florida Department of Transportation

RON DESANTIS
GOVERNOR

605 Suwannee Street
Tallahassee, FL 32399-0450

JARED W. PERDUE, P.E.
SECRETARY

For Immediate Release

March 27, 2023

Contact: Debbie Delgado

(904) 476-7138 | debbie.delgado@dot.state.fl.us

Arlington Expressway Resurfacing Project Starting Soon

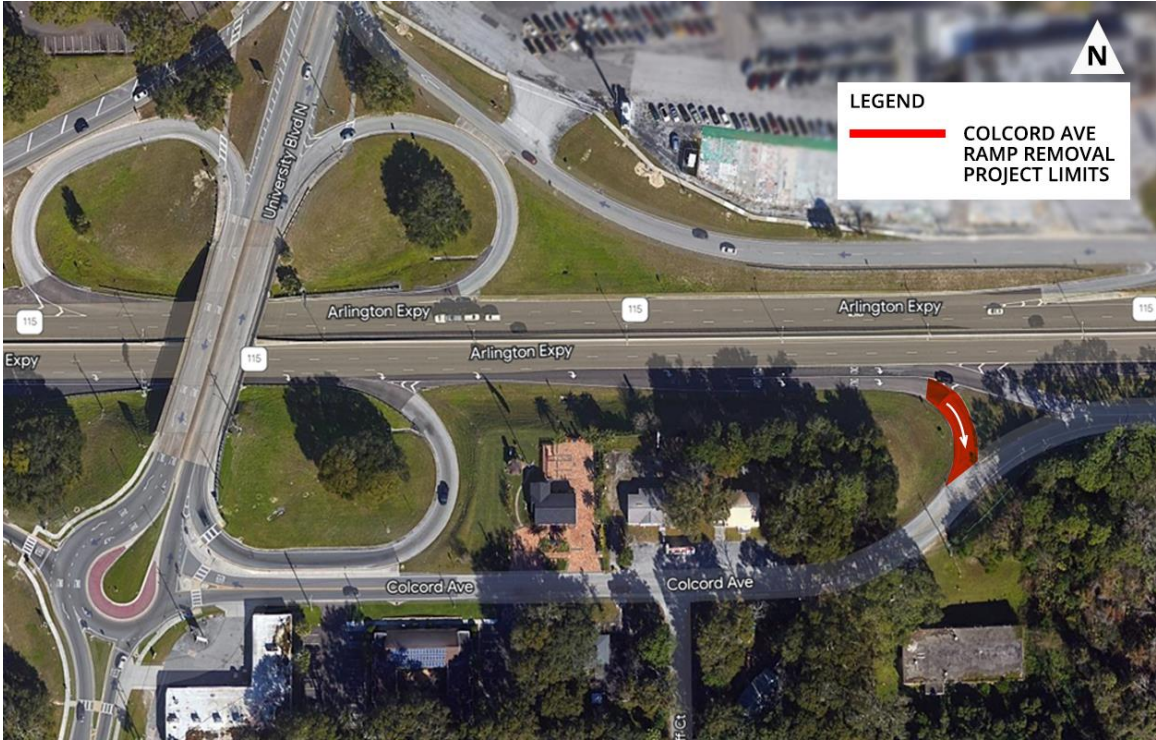
JACKSONVILLE, Fla. – A resurfacing and roadway improvement project on the Arlington Expressway from the Mathews Bridge to Southside Boulevard is scheduled to begin in early April.

The project includes milling and resurfacing the expressway and service roads, new signage, pavement marking improvements and pedestrian safety upgrades. In addition, the Red Bay Branch bridges, located east of Arlington Road on the north and south side service roads, will be rehabilitated. Detours will be in place during street-level reconstruction of the bridges.

The project also includes the removal of the Colcord Avenue exit, located east of the University Boulevard overpass. The exit ramp currently provides one-way access from eastbound Arlington Expressway to westbound Colcord Avenue (see map below).

In addition to the Red Bay Branch bridge detours scheduled later in the project, drivers should expect nighttime and overnight lane closures during construction. Lane closures will not be scheduled during peak travel times or on holidays or special events.

Superior Construction, Inc. is the contractor for the \$26 million project. It is scheduled for completion in fall 2024, weather and unforeseen circumstances permitting.



Stay informed about lane closures and roadwork in your area by following FDOT District 2 at [@MyFDOT_NEFL](#) on Twitter, at [MyFDOTNEFL](#) on Facebook or by visiting [nflroads.com](#). Drivers seeking real-time traffic alerts may visit [www.FL511.com](#) or download the FL511 app.

###